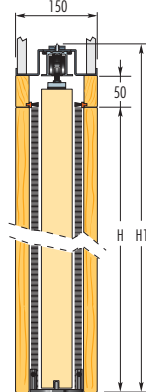
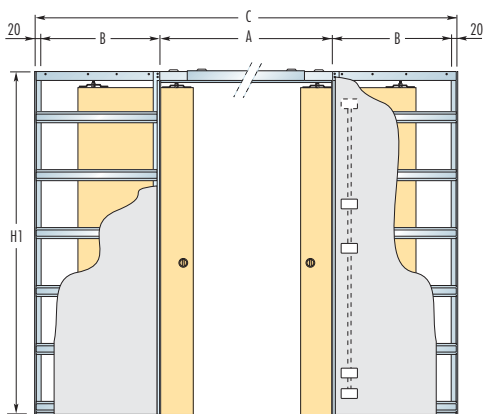


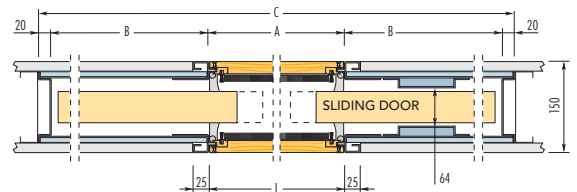


Counterframe for double door designed to incorporate wiring

The Em-B Eclipse LUCE is the only counterframe that allows both the wiring and electric socket boxes (max.5 on each side) to be located in the wall hosting the disappearing doors. A further opportunity to both save and customise space.



HEAD SECTION AND JAMB POST COMPLETE WITH BRUSH STRIP AND SEALS



NB. The counterframe system allows you the freedom to select and provide your own door leaf. See p.16 for further details.

The below dimensions are for guidance purposes only. Manufacturers drawings will be supplied for approval.

COUNTERFRAME FOR DOUBLE DOORS

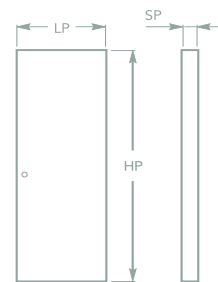
CLEAR PASSAGE OPENING (L X H)*	OVERALL DIMENSION C X H1	A	B	FINISHED WALL
1200 x 2030	2520 x 2115	1250	615	150
1400 x 2030	2920 x 2115	1450	715	150
1600 x 2030	3320 x 2115	1650	815	150
1800 x 2030	3720 x 2115	1850	915	150
1170 x 1971	2490 x 2056	1220	615	150
1322 x 1971	2842 x 2056	1372	715	150
1474 x 1971	3194 x 2056	1524	815	150
1626 x 1971	3346 x 2056	1676	815	150

*WHEN DOOR IS FULLY RETRACTED



DOOR PANEL

LP	HP
626	2040
726	2040
826	2040
926	2040
610	1981
686	1981
762	1981
838	1981



Dimensions in mm

SP=(100mm Wall Finish) = Min 35mm / Max 44mm
SP=(120mm Wall Finish) = Min 35mm / Max 54mm Doors